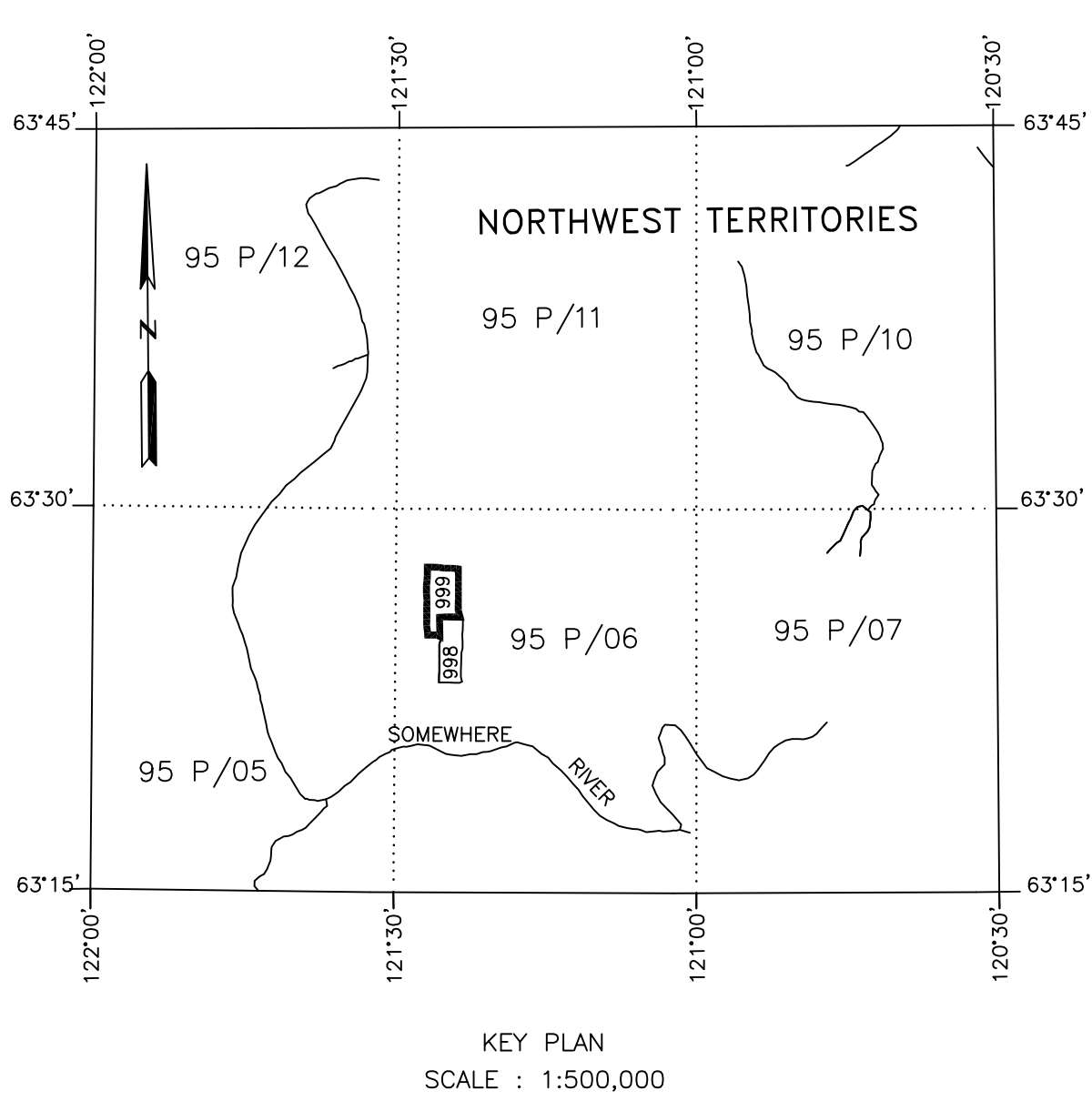
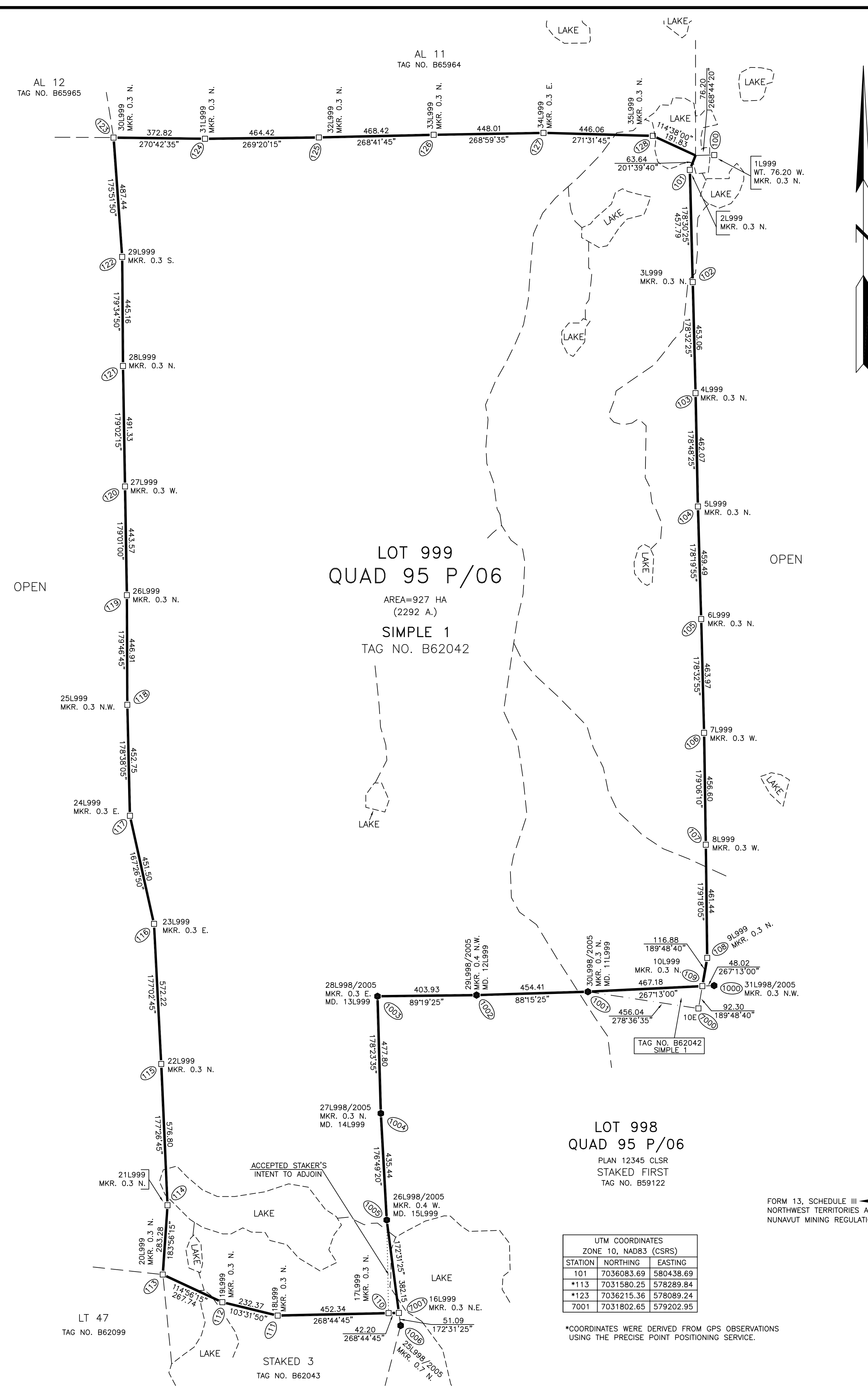


CANADA LANDS SURVEYS RECORDS

STATION NO.	FOUND EVIDENCE	LEGIBLE MARKINGS AND/OR COMMENTS
100	LP TAG	NE1 862042 SIMPLE 1, I. KNOW, U. R. RICH 230002, NOV 27/96, 10:30AM, NOV 27/96 10:43AM 250' W
101	LP TAG	SE2 BESHVA AL 11, I. C. DIAMONDS, AUG 23/98 10:05AM, 250' W
102	LP	ALUMINUM TAG MARKED EB1 SIMPLE 1
103	LP	ALUMINUM TAG MARKED EB2 SIMPLE 1
104	LP	ALUMINUM TAG MARKED EB3 SIMPLE 1
105	LP	ALUMINUM TAG MARKED EB4 SIMPLE 1
106	LP	FNE OF EB5 SIMPLE 1, EST.
107	LP	FNE OF EB6 SIMPLE 1, EST.
108	LP	FNE OF EB7 SIMPLE 1, EST.
109	LP	ALUMINUM TAG MARKED EB8 SIMPLE 1
110	LP TAG	SE2 862042 SIMPLE 1, I. KNOW, U. R. RICH, NOV 27/96 10:37AM
111	LP TAG	NE1 862043 STAKED 3, I. C. DIAMONDS 060845, JULY 7/98 2:57PM, JULY 7/98 3:05PM
112	LP	ALUMINUM TAG MARKED SB1 SIMPLE 1
113	LP	FNE OF SB2 SIMPLE 1, EST.
114	LP	PARTIAL TAG, SB3 SIMPLE 2, ACCEPTED AS SB3 SIMPLE 1
115	LP	ALUMINUM TAG MARKED SB4 SIMPLE 1
116	LP	PARTIAL TAG, WB2 SIM 2, ACCEPTED AS WB2 SIMPLE 1
117	LP	ALUMINUM TAG MARKED WB3 SIMPLE 1
118	LP	NO MARKINGS, STAPLES, ACCEPTED AS WB4 SIMPLE 1
119	LP	ALUMINUM TAG MARKED WB5 SIMPLE 1
120	LP	FNE OF WB6 SIMPLE 1, EST.
121	LP	ALUMINUM TAG MARKED WB7 SIMPLE 1
122	LP	PARTIAL TAG, WB8 SIM 2, ACCEPTED AS WB8 SIMPLE 1
123	LP	FNE OF WB9 SIMPLE 1, EST.
124	LP	FNE OF WB10 SIMPLE 1, EST.
125	LP	ALUMINUM TAG MARKED NB1 SIMPLE 1
126	LP	FNE OF NB2 SIMPLE 1, EST.
127	LP	ALUMINUM TAG MARKED NB3 SIMPLE 1
128	LP	AL 11, SB2
129	LP	NO MARKINGS, STAPLES, ACCEPTED AS NB5 SIMPLE 1
130	LP	AL 11 SB1
1001	IB	FNE OF EB10 SIMPLE 1, ACCEPTED POSITION OF IB
1002	LP	ALUMINUM TAG MARKED EB11 SIMPLE 1
1003	LP	ALUMINUM TAG MARKED EB12 SIMPLE 1
1004	IB	FNE OF EB13 SIMPLE 1, ACCEPTED POSITION OF IB
1005	LP	ALUMINUM TAG MARKED EB14 SIMPLE 1
7000	LP	PARTIAL ALUMINUM TAG MARKED 799 SIMPLE 1
7001	LP	SE2 SIMPLE 1



I. M. SURVEYOR LTD.
CANADA LANDS SURVEYOR
BOX 0000
YELLOWKNIFE, NT
X1M 0G0
Ph: (867)500-0000
Fax: (867)500-0000
MY PROJECT NUMBER : 000000



STATION	NORTHING	EASTING
101	7036025.69	5782828.84
113	7031580.25	5782828.84
123	7036215.36	5782828.24
7001	7031802.65	5782020.85

*COORDINATES WERE DERIVED FROM GPS OBSERVATIONS USING THE PRECISE POINT POSITIONING SERVICE.

CANADA LANDS SURVEYS RECORDS
DATE: _____ SPECIMEN ONLY

PLAN AND FIELD NOTES OF SURVEY OF
SIMPLE 1 MINERAL CLAIM
LOT 999
QUAD 95 P/06

LAT. 63° 26' N, LONG. 121° 26' W (APPROX.)
NORTHWEST TERRITORIES MINING DISTRICT,
NORTHWEST TERRITORIES

THIS SURVEY WAS EXECUTED DURING THE PERIOD OF JULY 17, 2006 TO JULY 23, 2006,
BY I. M. SURVEYOR, CLS.



- LEGEND
- BEARINGS ARE GRID, DERIVED FROM A LEAST SQUARES ADJUSTMENT OF GPS OBSERVATIONS HOLDING STATIONS 123 AND 113 FIXED, AND ARE REFERRED TO THE CENTRAL MERIDIAN OF UTM ZONE 10 (123° WEST LONGITUDE).
 - DISTANCES SHOWN ARE EXPRESSED IN METRES AND ARE HORIZONTAL AT GENERAL GROUND LEVEL.
 - TO COMPUTE UTM COORDINATES, REDUCE THE GROUND DISTANCES TO THE PROJECTION PLANE BY MULTIPLYING BY THE COMBINED SCALE FACTOR OF 0.9996734.
 - WITNESS DISTANCES INSCRIBED ON WITNESS LOCATION POSTS ARE IN FEET. TO CONVERT FEET TO METRES MULTIPLY BY 0.3048 EXACTLY.
 - LAKE AND STREAMS HAVE BEEN PLOTTED FROM NTS MAP SHEET 95 P/06
 - SURVEY REPORT AND SUPPLEMENTARY FIELD NOTES FOR THIS SURVEY ARE RECORDED UNDER FIELD BOOK _____ CLSR.
 - ALL PLACED POSTS HAVE BEEN MARKED WITH THE APPROPRIATE LOT NUMBER AND THE YEAR 2006.
 - EST. MEANS ESTABLISHED BY STAKER'S INTENT.
 - FNE MEANS FOUND NO EVIDENCE.
 - CLS 77, FOUND:
1. 6CM SQUARE IRON BAR, 78CM LONG PLACED.
 - 2. _____
 - 3. _____
 - STREAMS:
FRANZOSE LINE
 - LANDS DEALT WITH BY THIS PLAN ARE BOUNDED THUS _____
 - MARKER POSTS ARE ANGLE IRON 2.5CM X 2.5CM X 1.5M LONG.
 - 7 DENOTES ILLEGIBLE.

CERTIFIED CORRECT
I. M. SURVEYOR, CANADA LANDS SURVEYOR
DATE: _____



I, I. M. SURVEYOR, CANADA LANDS SURVEYOR, HAVE CAREFULLY EXAMINED THE GROUND INCLUDED IN THE MINERAL CLAIM DESIGNATED AS LOT 999 QUAD 95 P/06 SURVEYED BY ME AND HAVE OTHERWISE MADE ALL REASONABLE INVESTIGATIONS IN MY POWER TO ASCERTAIN IF THERE WAS ANY OTHER EXISTING CLAIM CONFLICTING THERWITH, AND I CERTIFY THAT I HAVE FOUND NO TRACE OR INDICATION AND HAVE NO KNOWLEDGE OR INFORMATION OF ANY SUCH CLAIM EXCEPT AS FOLLOWS: NONE

DATED AT YELLOWKNIFE, NT
THIS _____ DAY OF _____, 2006

I. M. SURVEYOR, CANADA LANDS SURVEYOR

DEPARTMENT OF NATURAL RESOURCES
SECTION 56, NORTHWEST TERRITORIES AND NUNAVUT MINING REGULATIONS
APPROVED

HEAD, CADASTRAL SERVICES - NT/NU