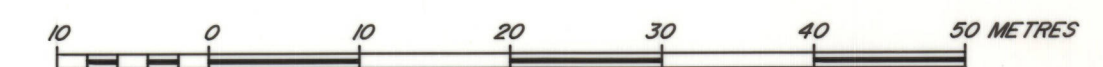


PLAN AND FIELD NOTES
OF SURVEY OF
Lots 1091 to 1094 and Walkway

HILL CREST SUBDIVISION
WHITEHORSE COORDINATED SURVEY AREA
CITY OF WHITEHORSE, YUKON TERRITORY

SCALE 1:500



THIS SURVEY WAS EXECUTED DURING THE PERIOD JANUARY 13,
TO MAY 1, 1988 BY PETER E. THOMSON, C.L.S.

LEGEND:

This plan supersedes Lots 1027 to 1030, and part of Lot 1042, Plan 66718 C.L.S.R., 58904 L.T.O.

Bearings are astronomic derived from the stated bearing 10° 56' 15" of the westerly boundary of lots 1029 and 1030 PLAN 66718 C.L.S.R. 58904 L.T.O. and according to that plan are referred to Longitude 135° West.

C.L.S. '77 posts found shown thus

C.L.S. '77 posts placed shown thus

Traverse lines and stations shown thus

Distances shown are horizontal at general ground level and are expressed in metres. To compute UTM coordinates, distances have been converted to sea level and to the projection plane by applying a combined conversion factor of 0.99949.

All posts placed or found are marked with the appropriate lot numbers, the year of survey, "R" for Road, "W" for Walkway and P.C. for point of curvature where applicable.

Lands dealt with by this plan bounded thus

The outline of former lots 1027 to 1030 has been omitted for clarity. All unnecessary monumentation has been removed.

I, Peter E. Thomson, of the City of Whitehorse, Canada Lands Surveyor, make oath and say that I have in my own proper person, according to law and the instructions of the Surveyor General of Canada Lands, faithfully and correctly executed the survey shown by this plan and field notes, and that the said plan and field notes are correct and true to the best of my knowledge and belief. SO HELP ME GOD.

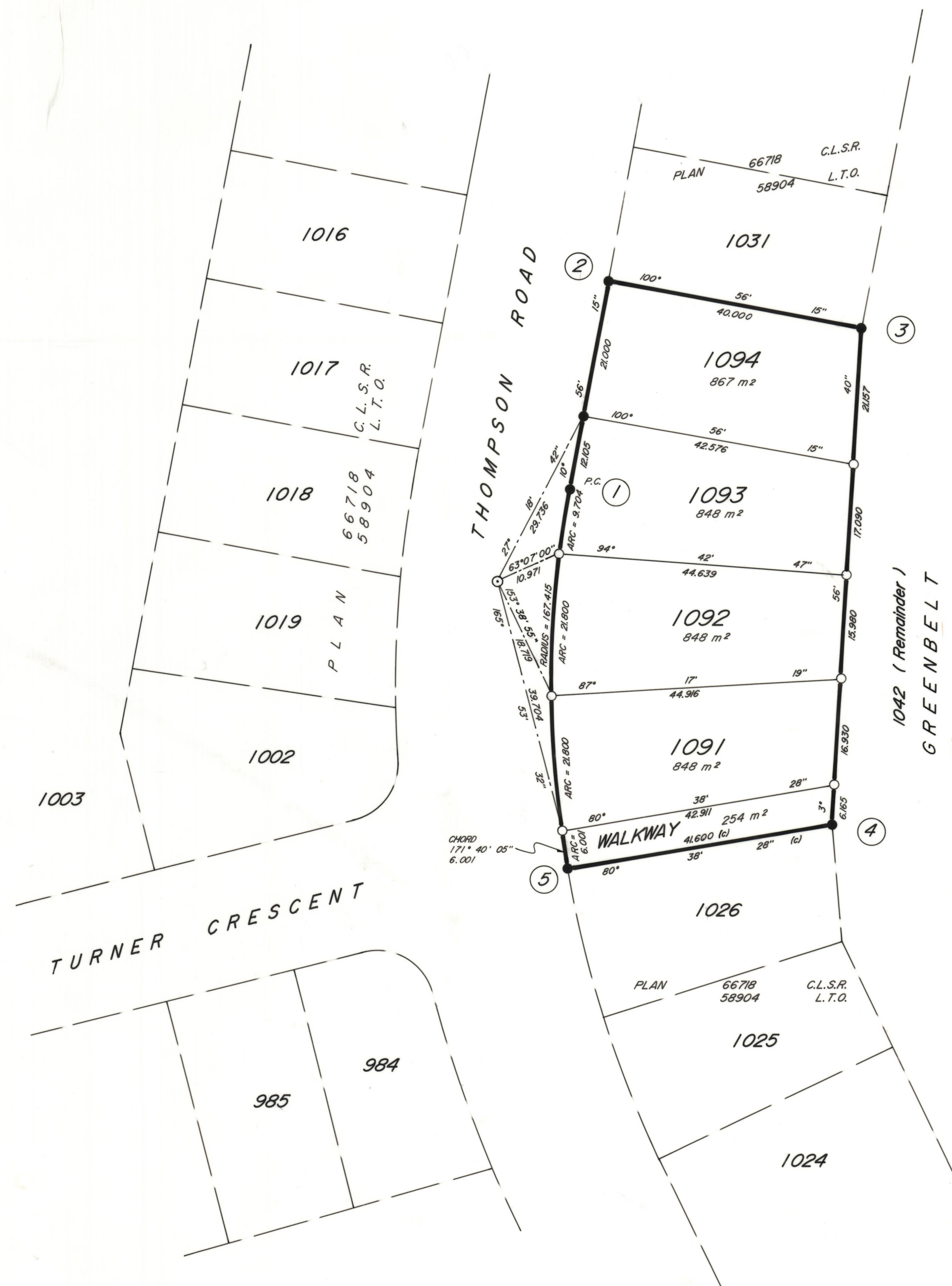
P. E. Thomson C.L.S.

Sworn before me at Whitehorse, Yukon
this 18 day of July, 1988

A. R. Ruckard
A Notary Public in and for the
Yukon Territory

THIS PLAN AND SURVEY ARE SATISFACTORY:

W. McInnis
Commissioner of the Yukon Territory
Date FEB 22 1989



CURVED BOUNDARY VALUES			
PARCEL	ARC	CHORD BEARING	CHORD DISTANCE
WALKWAY	6.001	351° 40' 05"	6.001
1091	21.800	356° 25' 32"	21.785
1092	21.800	3° 53' 10"	21.785
1093	9.704	9° 16' 38"	9.702

UTM COORDINATES (ZONE 8)		
MONUMENT	NORTHING	EASTING
1	6730174.945	494584.365
2	6730207.43	494590.64
3	6730199.85	494629.89
4	6730122.75	494624.58
5	6730115.99	494583.55