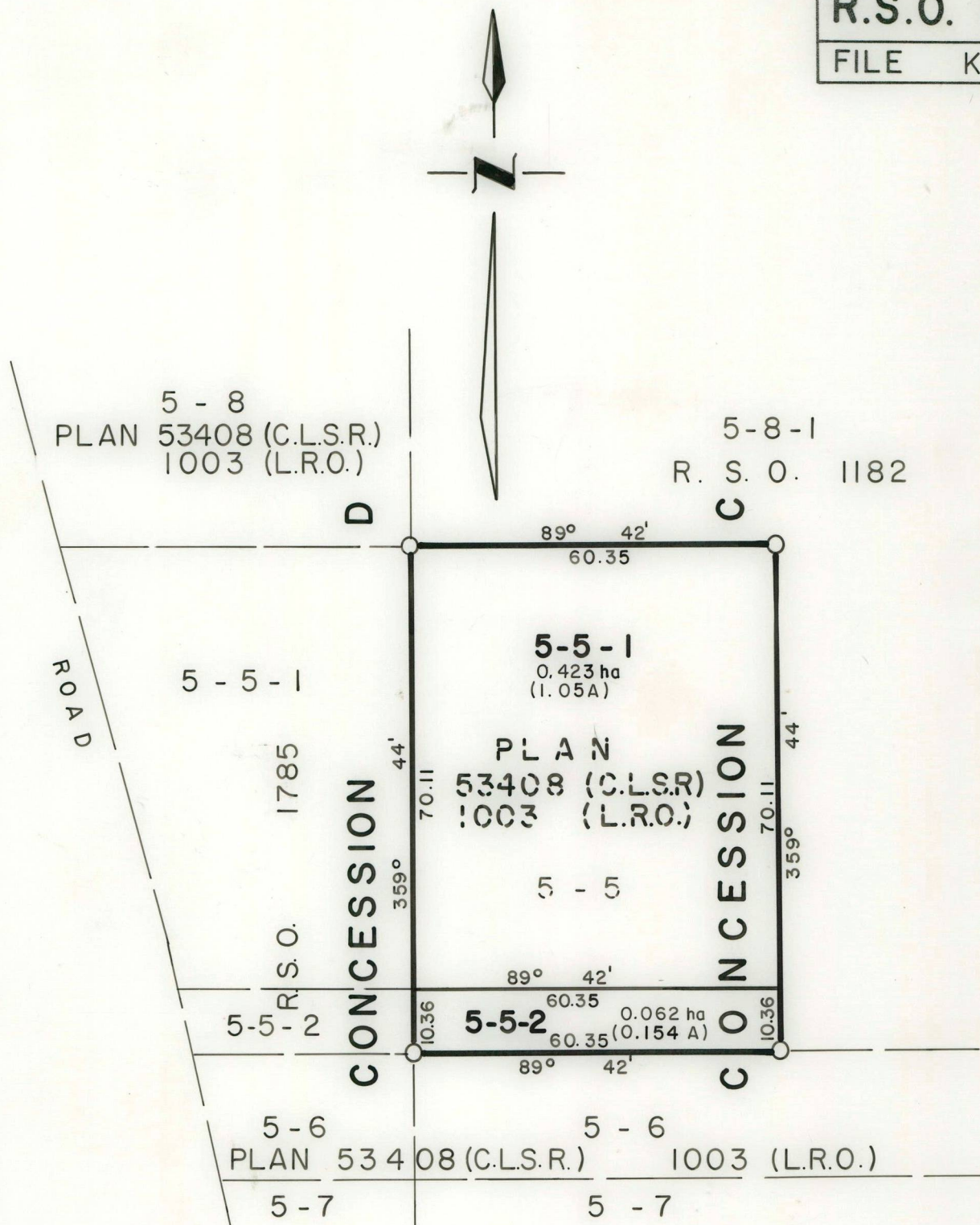


R.S.O. 1786

FILE K - 5

**METRIC:**

DISTANCES SHOWN ON THIS PLAN ARE IN METRES
AND MAYBE CONVERTED TO FEET BY DIVIDING BY 0.3048

PLAN OF
LOTS 5-5-1 AND 5-5-2, CONCESSION C
KETTLE POINT INDIAN RESERVE N° 44
TOWNSHIP OF BOSANQUET, COUNTY OF LAMBTON
PROVINCE OF ONTARIO

Based on Plan 53408 (C.L.S.R.), R.S.O. 1182, Sketch
and Letter of Request dated June 7, 1985.

SCALE 1:1000

0 20 40 60 80m

LEGEND

OLD PATTERN IRON POST ———— ○

I hereby certify that the boundaries shown hereon are
correct in accordance with existing survey plans and
information contained in Letter of Request dated
June 7, 1985.

W. H. H. H.
C. L. S.
Regional Surveyor Ontario

10 Oct. 85
(Date)

COMPILED BY: T.C.B.

EXAMINED BY: S.P./C.I.P.(C)

AMENDED:

DRAWN BY: MASH

REVIEWED BY: AA.