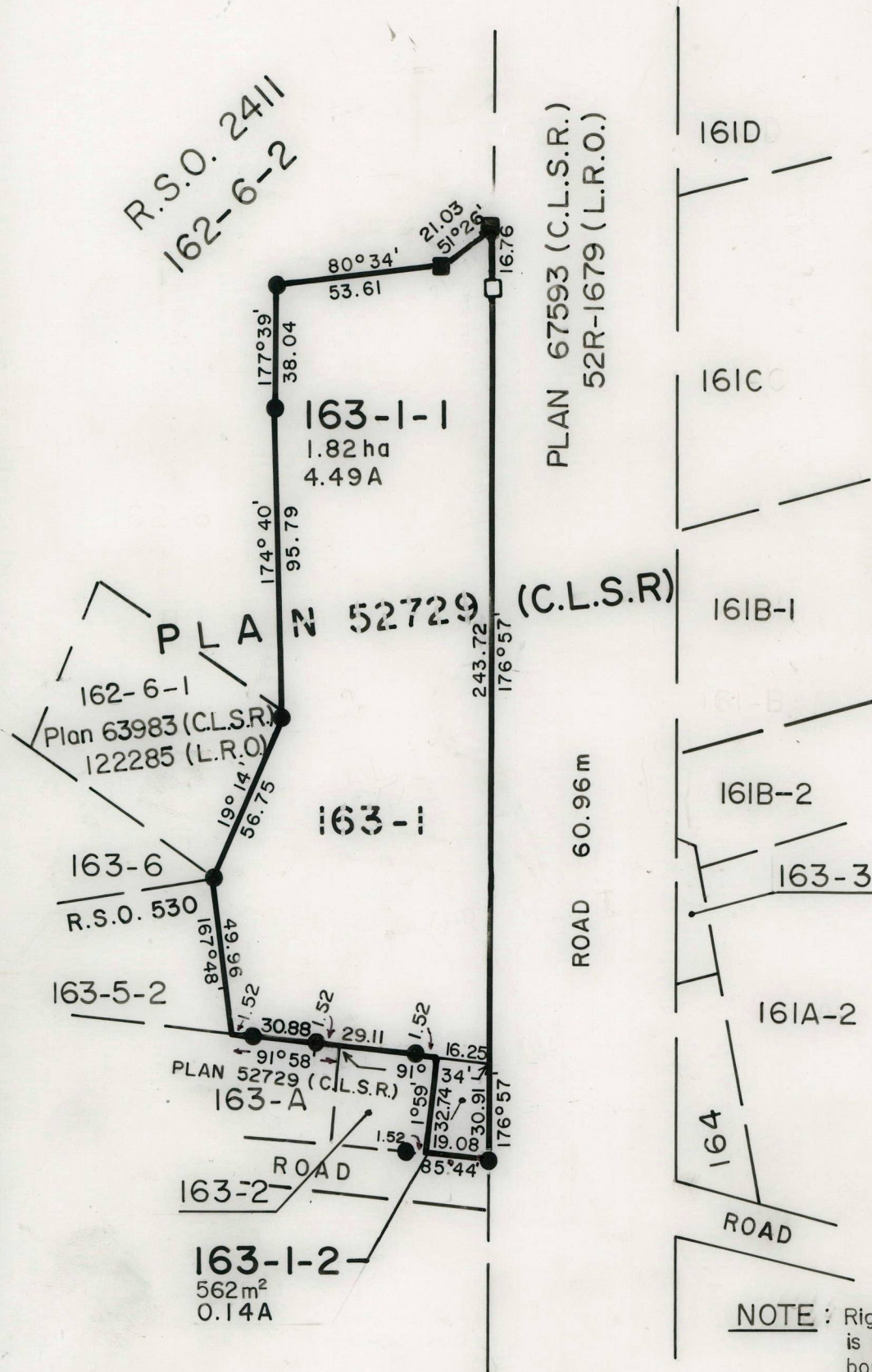


R.S.O. 2626

FILE A-9

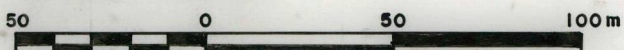
**METRIC:**

DISTANCES SHOWN ON THIS PLAN ARE IN METRES
AND MAY BE CONVERTED TO FEET BY DIVIDING BY 0.3048 NOTE THIS PLAN REPLACES L.S. 1845

PLAN OF
LOTS 163-1-1 AND 163-1-2
AKWESASNE INDIAN RESERVE NO. 59
CORNWALL ISLAND, COUNTY OF STORMONT
PROVINCE OF ONTARIO

Based on Plans 52729, 63983, 67593 (C.L.S.R.), L.S. 1845
And Transfer of Land document dated December 12, 1980.

SCALE 1:2000

**LEGEND**

Old Pattern Iron Post ●
Iron Bar (2.0 sq cm x 90 cm long) ■
Standard Iron Bar (2.5 sq cm x 120 cm long) □

I hereby certify that the boundaries shown hereon are correct in accordance with existing survey plans and information contained in Transfer of Land document dated December 12, 1980.

D.B. McManter
C.L.S.

March 31, 1988
(Date)

for Regional Surveyor Ontario

COMPILED BY: D.K./C.I.P.

EXAMINED BY: AA

AMENDED:

DRAWN BY: D.M.

REVIEWED BY: *EGG*