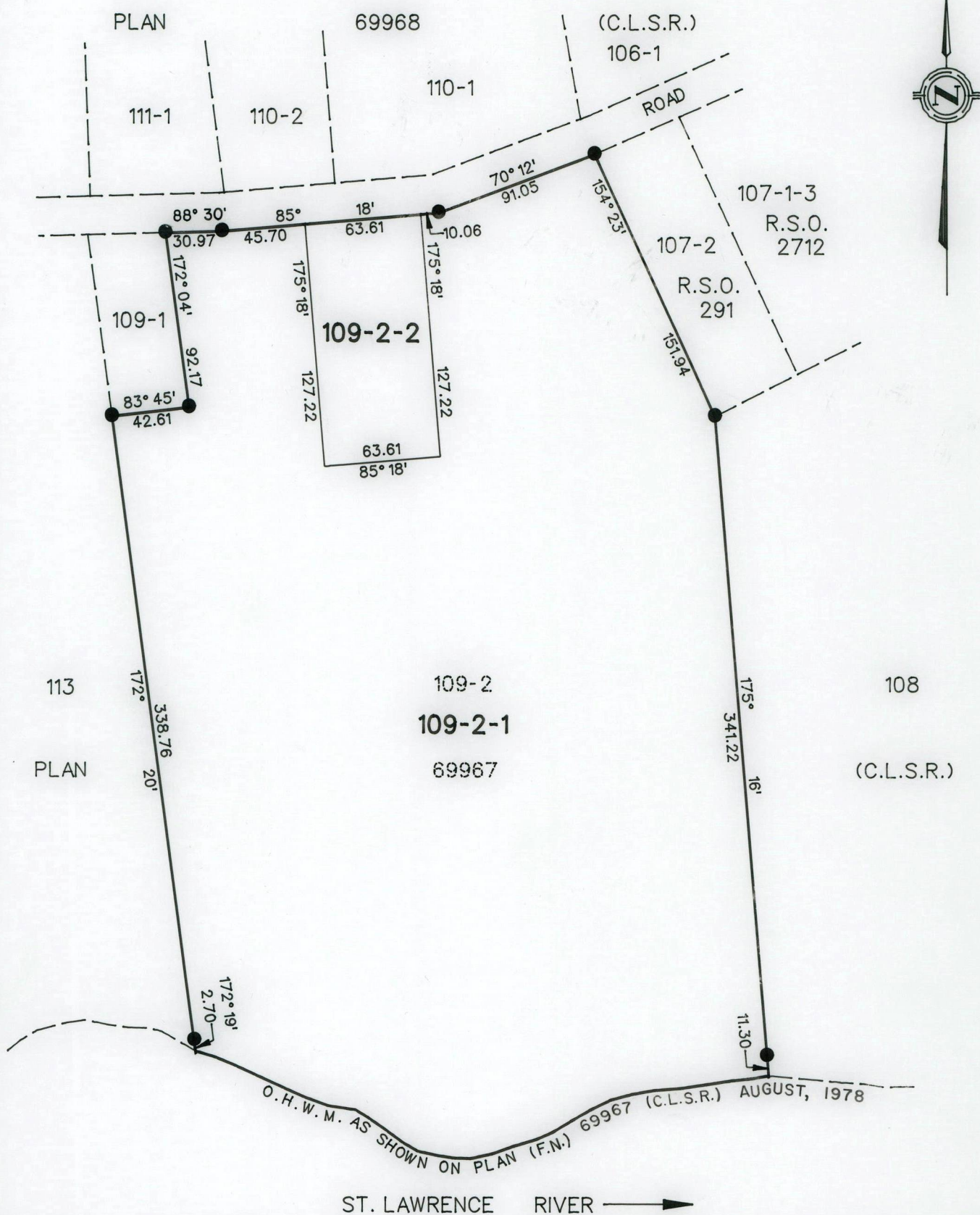


METRIC DISTANCES SHOWN ON THIS PLAN ARE IN METRES
AND MAY BE CONVERTED TO FEET BY DIVIDING BY 0.3048

R.S.O. 3645

FILE 06210



PLAN OF
LOTS 109-2-1 AND 109-2-2, CORNWALL ISLAND
AKWESASNE INDIAN RESERVE NO. 59
COUNTY OF STORMONT
PROVINCE OF ONTARIO

Based on Plan 69967 (C.L.S.R.), sketch and Transfer of Land document dated May 3, 1988.

SCALE 1:3000
75 25 0 75 150 Metres

LEGEND

Survey Monuments are shown thus

AREA TABLE

Lot	Hectares	Acres	Lot	Hectares	Acres
109-2-1	14.0	34.61			
109-2-2	0.809	2.00			

I hereby certify that the boundaries shown hereon are correct in accordance with existing survey plans and information contained in Transfer of Land document dated May 3, 1988.

COMPILED BY: CADAR Corp.

EXAMINED BY: *NTS*/MWB

DRAWN BY: CADAR Corp.

REVIEWED BY: *PDO*

for *R.G. Reid* Regional Surveyor Ontario

O.L.S.

Feb. 4, 1992.
(Date)

JPA

(2)